

FREE

RAIN OR SHINE

Third Annual **GardenWalk** **South Euclid**



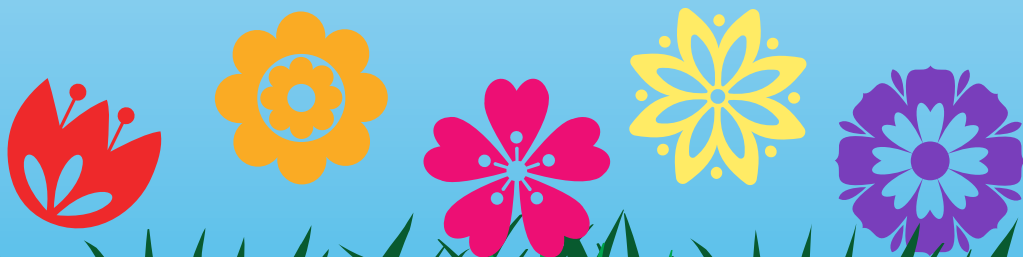
Saturday, June 8, 2019

Sunday, June 9, 2019

12 Noon to 4:00 PM

Self Guided Tour Of

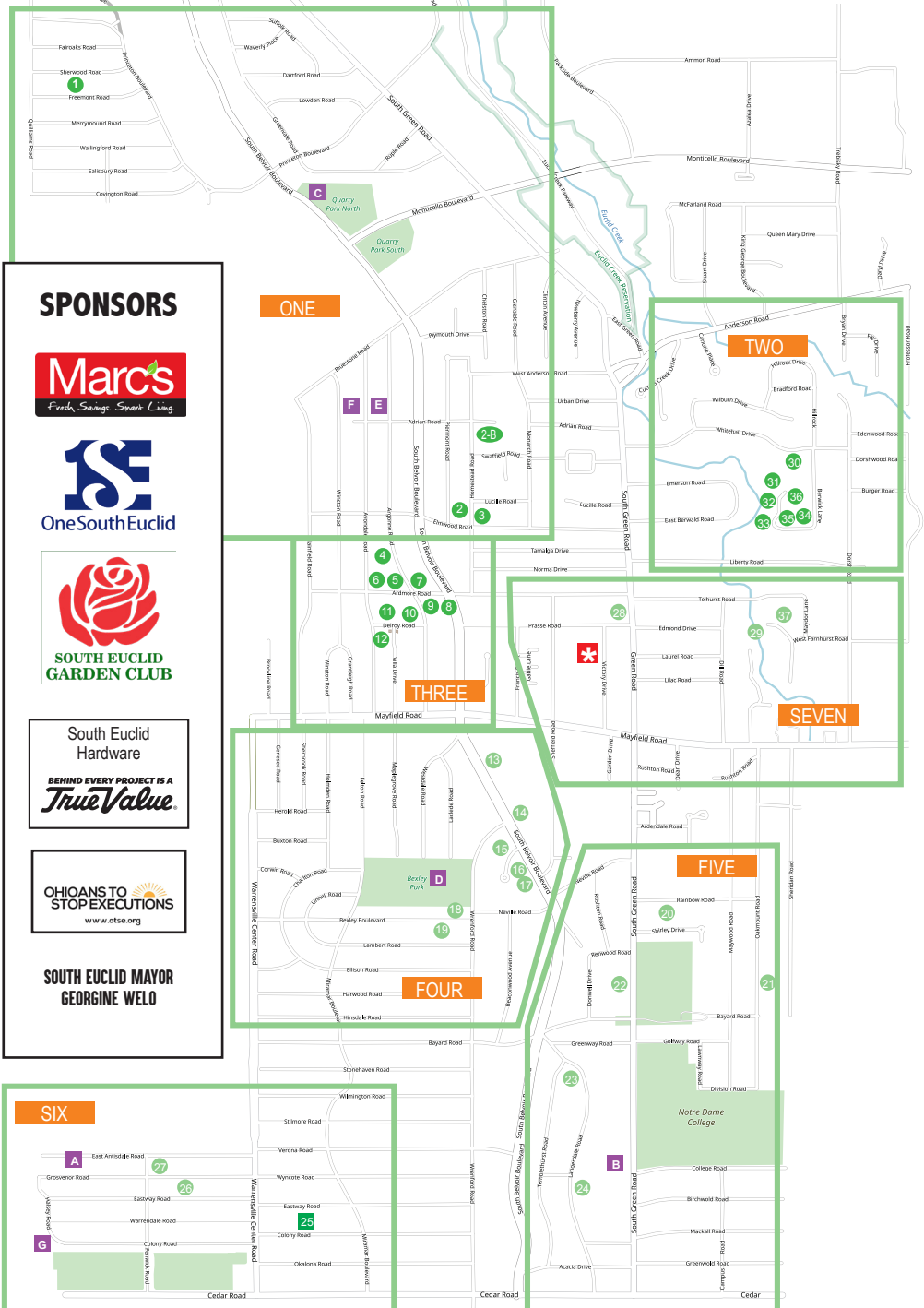
- 40-Plus Private Homes
- 21 Acre Nature Reserve
 - A 9-Mile Wetland
- 8 Unique Neighborhood Community Gardens
 - 3 Neighborhood Perennial "Pocket" Parks



For More Details Visit Us Online at
gardenwalksoutheuclid.com



south euclid



SPONSORS



South Euclid
Hardware

BEHIND EVERY PROJECT IS A
True Value.

OHIOANS TO
STOPEXECUTIONS
www.atsoe.org

**SOUTH EUCLID MAYOR
GEORGINE WELO**

GARDENWALK GROUP ONE

1. 3799 Freemont Road

Entering this backyard, tour goers are transported to a foreign land. The Japanese-style garden fencing encases the different garden rooms & adds an air of seclusion & peaceful contemplation. White Flowering Dogwood, dwarf American Arborvitae, Mugo Pine, 'Linesville' Arborvitae, statues & several lanterns help create the asymmetrical balance & symbolism which are key elements of the garden. The gravel pathways lead eyes past the plantings & seem to beckon exploration of what's around the next corner, maybe a tea house. The dwarf 'Globe Blue' Spruce, 'Siberian Carpet' Cypress & 'Gray Owl' Juniper help add simplicity & texture to the overall design. The basic elements of the plantings & rocks with simple clean lines, help create this tranquil retreat. A small bench on the right offers the perfect spot to just sit & reflect!

2(B). 1095 Homestead Road

Here is a unique gardener's interpretation of a distinctive garden. A collection of statuary & other interesting yard art is interspersed throughout the landscape beds. Assorted flowering perennials & shrubs help ground the view. With several iron benches & chairs, take a break & enjoy the special pieces of this landscape quilt!

3. 1203 Homestead Road

This Japanese-style garden combines the basic elements of plants & rocks with simple clean lines to artfully create a tranquil sanctuary. Conifers provide soothing shades of green for year-round interest. Some echo the pyramidal form of the pagoda while others frame the feature with their low spreading branches. Of course, the back-island garden features a lantern in this highly manicured masterpiece!

2. 1191 Piermont Road

Wow, what one can do with a minimal amount of space! Perennials do a joyful dance with annuals & garden art at every turn. Every nook & cranny will put a smile on everyone's face. The experience culminates with a pond & waterfall!

C - Quarry Community Garden (est. 2012) 711 South Belvoir Blvd.

A recent addition to the South Euclid community garden family, Quarry is the only community garden that contains a bio-retention cell. The other flower gardens were planted only a few years ago & have matured into a flourishing multi-species environment that attracts a variety of pollinators to the vegetable gardens. From the first awakenings of spring to the last vestiges of fall, insects

can be seen partaking in the nourishment that the pollinator garden provides. This garden was planted by the South Euclid Garden Club along with the entrance gate gardens. The entrance provides a welcome mat for visitors. The garden club also planted a Sedum collection in one of the garden plots. The variety of colors & textures that are available in the Sedum family are featured. Outside the gate throughout the park are 5 more gardens. Near the park entrance is a garden built around the old Quarry fireplace with a bench to savor the plantings. The four other gardens are planted in old exercise stations along Belvoir Blvd. that range from sun-drenched to shade-dappled.

E - The Argonne "Pocket" Park, "Pam's Garden"

1080 Argonne Road

Developed with the assistance of residents Jim & Pam O'Toole who helped with the design & maintenance of this vibrant perennial-filled sitting park. The rhythmic flow of the naturalistic plantings leads visitors along the winding garden path. Everywhere guests look there's something to behold. The park also features a Little Free Library & decorative benches. The colorful ambiance of the park changes with the four seasons! Just the place to spend a lazy afternoon.

F - The Winston "Pocket" Park (1085 Winston Road)

Located in close proximity to the Argonne Park, serves as a favorite walking path between Avondale & Winston Roads. Two decorative benches allow residents to stop & enjoy the park-like setting. The park boasts a four-square court & a grassy play area for children. It was the site of the City Jam live music festival a few years ago!



GARDENWALK GROUP TWO

34. 1172 Berwick Lane

This garden in the "corner" of the cul-de-sac has a delightful vantage point. The front yard complements the neighboring gardens. The entry area beds are graced with an artful display of Pines, Rhododendrons, Azaleas, Stachys & Clematis. Greeting visitors are Daisies & Obedient Plants in the sunny perimeter along the side. The backyard is also graced with Azaleas & Rhododendrons, with Hellebores & Myrtle joining in, leading guests to a stone deck & patio nestled in the glen. The cozy shady woodland area offers the perfect escape from a hot, sunny afternoon!

33. 1199 Berwick Lane

The front & side perennial beds are a work-in-progress for the new homeowners. The front porch offers a fascinating vantage point to observe the wonders of nature. Hosta, Iris, & an assortment of shrubs & trees offer a kaleidoscope of textures & colors. While walking along the side garden also overflowing with Hosta & Iris, a tributary of Euclid Creek provides a calming backdrop.

35. 1200 Berwick Lane

Sited on a corner lot, this gorgeous garden sports a plethora of island beds. Adorning the front of the house, Boxwood, Roses & Pachysandra create a welcoming entry; while an arbor covered with climbing vines adds vertical interest. Other beds overflow with Lily of the Valley, Siberian & German Iris, Daisy, Rhododendron & other lovely touches. While walking about on Berwick, stop & smell the roses, rest under the shade trees & enjoy the pleasurable experience.

32. 1203 Berwick Lane

A fusion of different sources of inspiration from years of travel, this restful haven is planted in the cottage-style. The shady front gardens are a flowing eclectic collection of trees, shrubs, perennials & container plants. Layered plantings of Roses & almost 60 containers beautify the home's side garden. A repurposed children's playset in the backyard holds plantings of Sweet Autumn Clematis & Climbing Hydrangea. Clematis intertwined with Roses along the double decks offer a lush view of a tributary of Euclid Creek. Kick back & enjoy a lazy afternoon!

31. 1207 Berwick Lane

Approaching this garden, sightseers are greeted with a colorful display of plantings that seem to wave a welcoming hello. Annuals & perennials are nestled amid lots of novelties & potted plants which escort visitors along the garden path. Walking through the back gate, guests will pass by plantings of Iris & Hosta, to name only a few of the goodies that lie within. Two amazing raised decks surround an inviting heated in-ground pool with lots of colorful potted planters & flowers. At the rear of the property is the beautiful flowing Euclid Creek. Truly a sight to behold!

36. 1208 Berwick Lane

Located on a quiet cul-de-sac, the unusual setting of this garden, with hills & valleys all in one property, provides an opportunity to showcase a multitude of flowers, shrubs & trees. A vast array of horticultural species is showcased using a variety of design techniques. Raised beds, retaining walls, dry alpine & moist woodland settings are all incorporated into this luscious landscape. Starting at the intimate entrance accented with lush verdant foliage & ending at the sunny raised beds along the driveway, gardeners will be taking plenty of notes!

30. 1214 Berwick Lane

Meandering along the long stately driveway bordered by a gentle grassy slope, visitors can only imagine what treasures lie within this landscape. A unique rock garden with Yucca & shrubs is nestled into the climax at the top. The classic front garden is bordered by Boxwood & bulbs. One can only dream!



GARDENWALK GROUP THREE

6. 4163 Ardmore Road

The first impression combines a plethora of plants into a horticultural concerto. Hosta & Lenten Rose lead the charge of a perennial & annual ensemble that builds into a crescendo that climaxes at the front of the house. A masterful illustration of the beauty of a simple design!

4. 1262 Argonne Road

The front garden is a sight to behold. The perennial garden is planted with Hosta, Hydrangea & ornamental grass for minimal upkeep due to time & travel. Who said gardening has to be a time-consuming endeavor?

5. 1284 Argonne Road

The perennial front garden gives way to several "no water" vegetable plots which provide for the family throughout the season. What isn't consumed by early fall is either canned, dehydrated or frozen for the winter months. Although the deer camp out on this corner lot, the crops are protected & thrive. Yumm!!!

7. 1285 Argonne Road

Come enjoy a cheery corner garden that features colorful low-maintenance perennials. In the side garden, vegetables & flowers enjoy each other's company, as well as, the periodic visitor, raccoons, deer & groundhogs. Neighbors often call to notify them of unwanted visitors!

8. 1304 South Belvoir Blvd.

This home's well-crafted perennial gardens begin at the sidewalk & flow into each area of the landscape. Elegant combinations of dramatic foliage, textures & blooms mingle together throughout the front garden to create artistry in every corner of this lush landscape. Carefully placed annuals add a glimmer of color to the "sea of green". Time permitting, the back garden will be open for visitors' enjoyment. Check the garden sign for details. Once callers enter the back gate, masses of thoughtfully blended plantings surround a pond with another hidden surprise nestled in the back corner. Guess what, it's a frog pond!

9. 1315 Argonne Road

A traditional landscape, in the front, features natural plantings where textures, foliage & verdant hues add visual interest throughout all four seasons. Trees, shrubs & perennials elegantly grace the shady back patio. The perfect place to relax or entertain!

10. 1320 Argonne Road

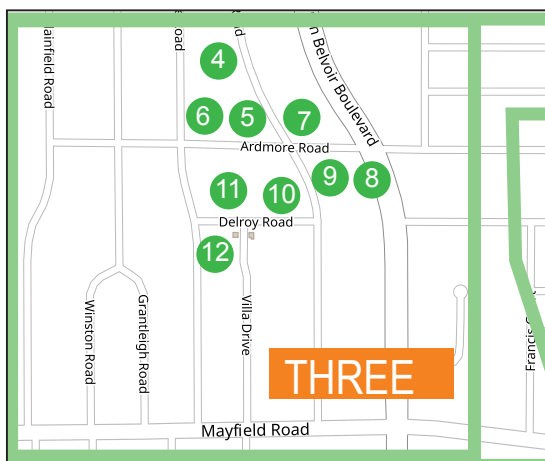
The "fullness of joy" was named by the homeowner's father 39 years ago & is a loving tribute to him. Casual exuberance & charm captivate garden visitors the moment they glimpse a dwarf Lilac, Sedum & several varieties of Iris that grace the front garden. After strolling along "Sedum Row," guests will pass under a Trumpet Vine into the "secret" backyard garden. Their love of Daylilies, Hosta, Lilies, miniature gardens & art objects abound throughout numerous rooms which escort guests to the Japanese-inspired garden. Seating areas are strategically placed to offer several different vistas with opportunities for solitude & reflection. In early summer, the whimsical nature of the garden takes center stage. Come savor the experience!

12. 1333 Avondale Road

This delightful corner lot is truly a labor of love. The front garden has serpentine plantings of ferns & Hosta graced with colorful annual baskets that continue along the side to the back deck, where most gardens would end. However, the real surprise is tucked behind the garage, nestled in a shady corner. What an amazing revelation!

11. 4165 Delroy Road

What a difference a few plants can make! The cute front yard shouts out the homeowners' personality with perennials & annuals doing a joyful two-step. Vibrant flowers, such as Cannas, ornamental grasses & lush greenery fill every nook & cranny of this landscape. Come dance among the flowers & maybe even learn the "L-step"!



A Thriving Community On The Move

GardenWalk South Euclid is a legacy to the city's 100th Year Celebration. The free, self-guided tour allows visitors to tour at their own pace and visit more than forty eight neighborhood gardens, a twenty one acre nature reserve, a Sanctuary on the Green, unique neighborhood community gardens, a nine-mile wetland, and neighborhood perennial "pocket" parks. The event is held rain or shine and visitors can bike, walk or drive the tour route while discovering shops, unique restaurants, green spaces and gathering places in our thriving community. The GardenWalk draws hundreds of visitors from as far away as Erie P.A., Smithville, Dublin and Columbus. Garden maps are available online and the South Euclid Community Center on Victory Drive. What an excellent way to start the summer and enjoy the beauty around us!

GARDENWALK GROUP FOUR

13. 1515 South Belvoir Blvd.

A classic home ... a classic garden. But juxtaposed to the classicism is contemporary glass sculptures interspersed throughout the landscape, reflecting the personalities of the homeowners. Culminating in the backyard, a very personable & inviting patio is to be found. Guests can enjoy the manmade lush plantings contrasting with Mother Nature's plantings in the natural wooded area that lies beyond the garden. Quite a treasure to behold!

14. 1573 South Belvoir Blvd.

Here's another example of a gardener's unique perspective on life. A fine example of a skillfully-constructed arbor enhances the gorgeous Roses, Tree Peonies & reflective statuary. Featured in the front garden, these items reflect the homeowners' cultural heritage.

15. 1600 South Belvoir Blvd.

Built into a hillside, a small garden by the side street greets visitors accented with a sturdy stone wall & plantings of flowers & small shrubs. Behind the 1950's ranch, is a newer patio with two rock retaining walls supporting a collection of Hostas. On the patio, containers are potted up with different herbs, Geraniums & hot weather-resistant flowers. Truly an example of outdoor living!

17. 1630 South Belvoir Blvd.

Set into a hillside, the contemporary house serves as a backdrop to this contemporary landscape. The entry garden offers, for visitors' enjoyment, unique topiary, shrubs and grasses. The tidy mulch contrasts both in texture and color with the border stones that outline the garden. Here's a simple design that's far from being ordinary.

18. 4231 Bexley Blvd.

Who said a front garden full of vegetables isn't pretty? Marry them with perennials & the union creates a winning combination. Plus, they're quite appetizing!

16. 1616 South Belvoir Blvd.

A collection of ornamental grasses greets visitors as they enter this garden. Different

colors, shapes & sizes proves that grasses are definitely not boring. Assorted rocks line the edges of the planting areas differentiating the landscape grasses from the lawn grass. Natural rock is placed in formations to add height & interest to the view.

19. 4222 Bexley Blvd.

Ever wonder what type of garden a busy young family with literally "zero" time should construct? This yard is a perfect example of what can be done. The front trees & perennial plantings compose a striking front view with a backsplash of mulch. The rhythmic flow of the side garden takes visitors to a low-maintenance rear garden that sports a relaxing deck. Why have a ho-hum yard? Here's a real stand out eye catcher!

D - Bexley Community Garden (est. 2014)

1630 Wrenford Road

One of the newest community gardens, Bexley nourishes the body, the mind & the soul of its gardeners. Members of the neighborhood persuaded the city to build a new garden for their use. The entrance garden still has to mature into its full potential, but in time, this area will provide a wonderful backdrop to the vegetable plots. Bexley is also located in a park setting.



GARDENWALK GROUP FIVE

21. 1767 Oakmount Road

Approaching the front landscape, a mix of Hydrangeas, Roses, ornamental grasses & Azaleas greet visitors with a warm welcome. Small statues, a stone bench & patio allow for a brief respite. Then, stroll along the path beside the colorful side garden to the arbor gate where a Climbing Hydrangea escorts guests into the back gardens. Blueberry bushes, Sedum, Clematis, Echinacea, Rhododendrons, Lilies & Garlic abound throughout the panorama. Be sure to follow the rock paths to the “secret” & herb gardens. Bird feeders, garden gnomes & bird baths add to the enchantment!

20. 4498 Rainbow Road

Enjoy one of South Euclid’s heritage homes in a traditional garden setting. Daylilies, Rudbeckia & other perennials greet visitors in a time-honored border design. With a deep woodland backyard, the homeowner has collected interesting perennials such as ferns, Daylilies & Hostas. Several varieties of ferns are located in front of a retaining wall & interspersed between hand-arranged stones. Numerous garden rooms are defined by rock borders. A nature trail has been laid out to intertwine around the various spaces of the landscape.

22. 1776 South Green Road

This Cape Cod-style home, nicknamed “the estate,” is almost an acre. It’s landscaped with a natural border of shrubs & trees which lends a park-like feeling. Cool fountains & original art are integrated into the perennial landscape. The homeowner, a full-time artist, has added her creative touch to her front & back steps. The studio/garage, which opens with front & back doors, is full of painted tools & other whimsical embellishments. A unique experience.

23. 1876 Langerdale Road

Reflective of the diversity of this suburban community, this quaint garden brandishes a shady demeanor. A traditional landscape of thoughtfully chosen plants & artifacts reflect the rustic feel of the neighboring homes. The perennial front & side gardens give way to the colorful containers used as spotlights that line the back deck & contrast with the natural setting surrounding the backyard. Located in a valley, this truly serene setting beckons visitors to stay awhile!

24. 2019 Laurel Hill Drive

This double lot is a masterful use of space. The simplicity of the shady front garden accentuates the stone architecture of the home. Enter the garden from the side lot which features an artistic living structure of 3 tree stumps of varying heights with vines, containers & a black brass headboard. Then enter the secluded perennial back garden where guests will feel like they’ve traveled to England. This inner sanctuary is truly an unforgettable sight to behold!

B - Nine Mile Wetland - 1980 South Green Road

The Nine Mile Wetland is a naturalized stormwater detention & treatment area that was originally a segment of Nine Mile Creek. It was first converted to a grass-covered retention basin to capture rain from storm drains connected to pipes beneath parts of South Euclid & University Heights. In order to slow the flow, filter & clean the water before it rejoined the creek buried under Belvoir Blvd. & make its way to Lake Erie, the basin was widened & converted, in 2008, to a series of 13 ponds & weirs (small dams) & was planted with native trees, grasses & perennials. Just below the overlook, a stand of Common Milkweed serves as a Monarch Butterfly nursery. Ducks are regularly seen in the ponds. Now, stormwater leaving the basin at the north end is cleaner than the water entering from the south end & from South Green Road. The native vegetation supports a robust, diverse population of birds & wildlife. The observation deck is on Green Road next to the Sanctuary on Green.



GARDENWALK GROUP SIX

27. 3861 Eastway Road

A breath-taking corner lot explodes with a life force of Cypress & Blue Spruce. Stone battlements produce a fortress-like feeling against the red brick castle. Circles of Lemon Cypress create a flowing cavalcade & fruit trees provide a smorgasbord for birds & wildlife. Flowering beds & containers encourage a feeling of profound & delighted enchantment!

25. 4062 Eastway Road

"A garden always in transition," the owners' labor of love abounds throughout. Elegant combinations of dramatic foliage, textures & blooms merge to create artistry in every corner of this opulent landscape. Discover many surprises following the grassy path.

26. 3890 Warrendale Road

While approaching this gem, be dazzled by a stunning display of perennials & shrubs in this meticulous garden. A colorful

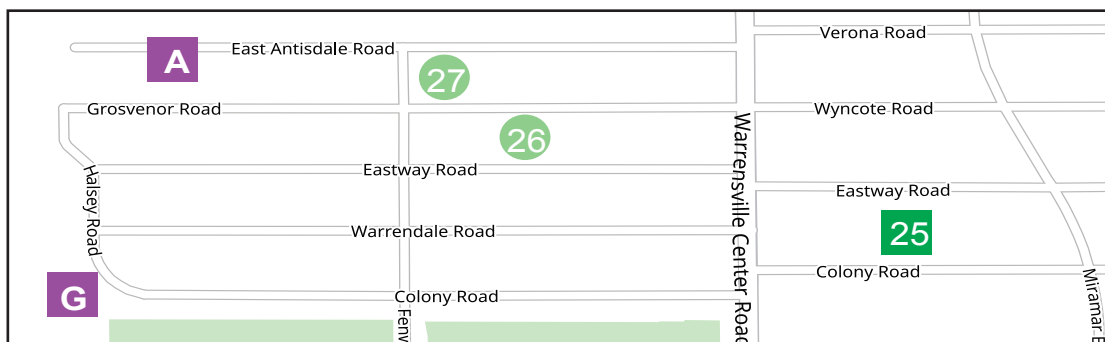
promenade of annuals dances merrily through the gardens providing a captivating vision. A verdant landscape can definitely be gorgeous!

A - Oakwood Green - 3761 East Antisdale Road

Oakwood Green is a 21-acre nature reserve donated to the City of South Euclid by the developers of Oakwood Commons, who created the 7-acre wetland complex & the fitness trail. Preserving this portion of the former Oakwood golf course is allowing the original Oak forest to reclaim the land, provide habitat for birds & wildlife, & improve air quality. The wetland receives storm water that has been filtered through the bioswales at Oakwood Commons & is home to ducks & a resident blue heron.

G - The Colony "Pocket" Park (3750 Colony Road)

Serves as a quiet destination featuring naturalized areas overlooking the Dugway Brook. The focal point of the garden is a wooden sculpture created from a fallen tree found on the site by Sanctuary on Green's Norbert Koehn, an award-winning & nationally renowned sculptor. Truly a sight to behold!



GARDENWALK GROUP SEVEN

28. 1320 South Green Road

Vibrant flowers & opulent foliage are happily nestled in every nook & cranny in this corner garden. The rhythmic flow of the front yard embraces onlookers. Tiered beds of richly layered plantings rise up to direct visitors to view the garden along the side. A peak into the back yard reveals a pond creatively tucked into a shady corner. Marvel at the ingenious use of space as an impressive array of vegetation happily co-exists.

29. 4614 South Lyn Circle

A private secluded garden on this cul-de-sac provides a quiet respite from the troubles of the day. With Euclid Creek in the background, gurgling water drowns out the sounds of the city. Rustling grasses sway in the breeze & hypnotize one with their movement. Other plantings add splashes of color & interest. And, all of this is just in the front yard. A front porch affords a stage to watch & listen. Then stroll along the side garden to the surprise that awaits walkers in the back, as the sound of rustling water soothes the very soul!

37. 4625 South Lyn Circle

The simplicity of the front garden doesn't hint at the complexity of what awaits around the corner. When entering the backyard area, guests are greeted by well-crafted gardens that flow into each area & level of the property. A gazebo & stone patio anchor the lush perennials & evergreens that abound throughout. While strolling along the sloping green carpet, remember to stop & enjoy a panoramic view of this garden sanctuary!

