

RAIN OR SHINE

FREE

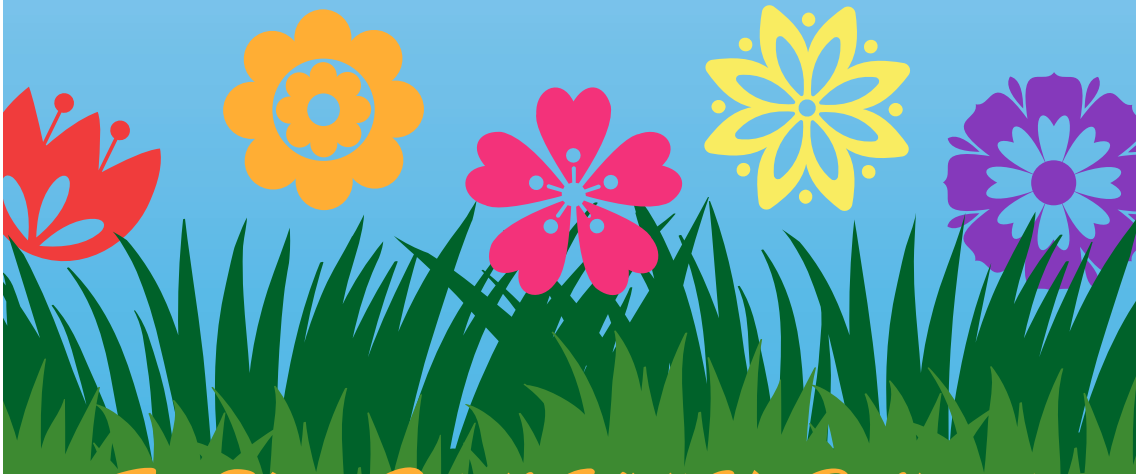
Second Annual **GardenWalk** **South Euclid**



Saturday, June 9, 2018
Sunday, June 10, 2018
12 Noon to 4:00 PM

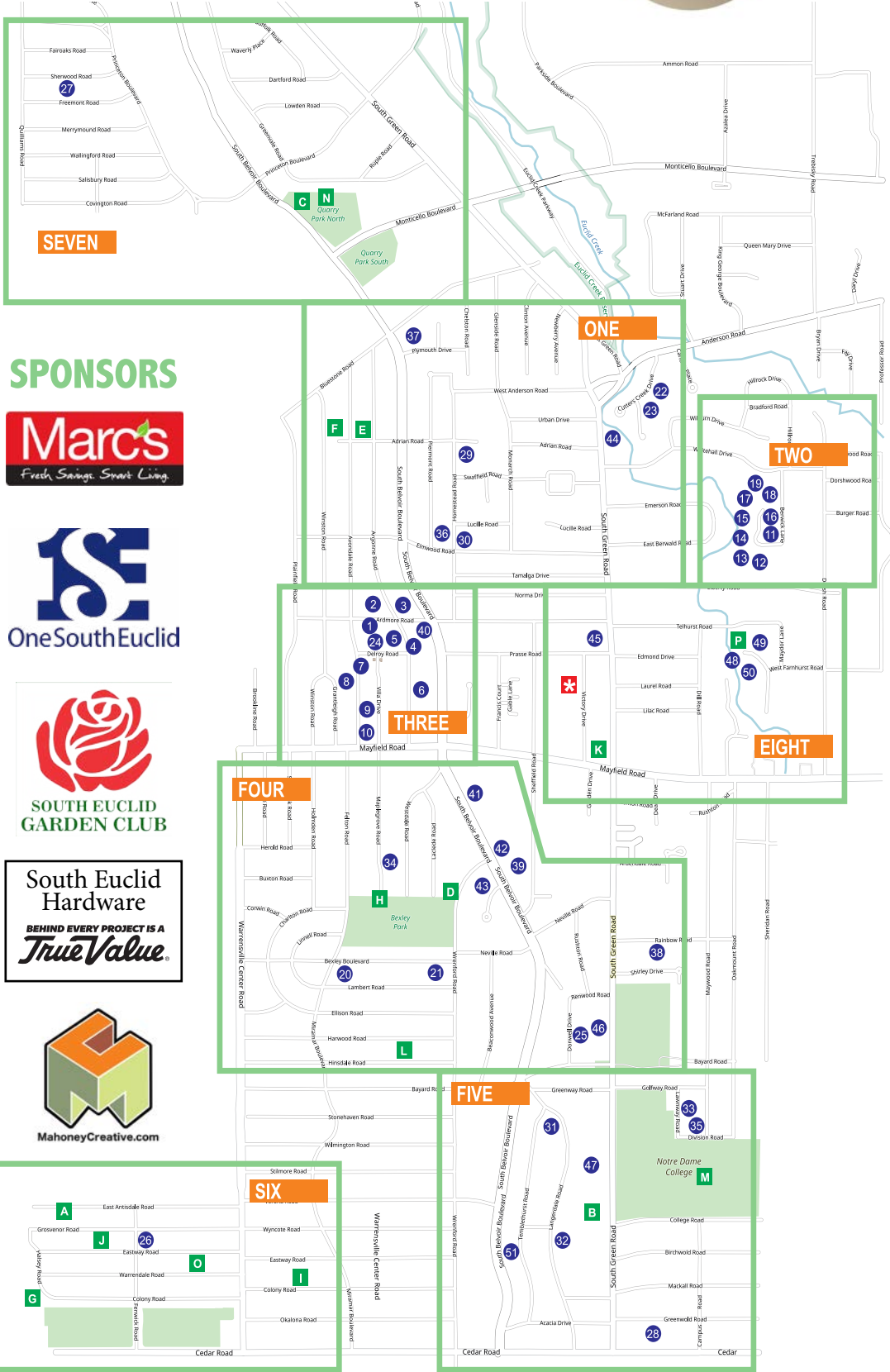
Self Guided Tour Of

- 48 Plus Neighborhood Gardens
 - 21 Acre Nature Reserve
 - A 9-Mile Wetland
 - A Sanctuary On the Green
- 8 Unique Neighborhood Community Gardens
 - 3 Neighborhood Perennial "Pocket" Parks



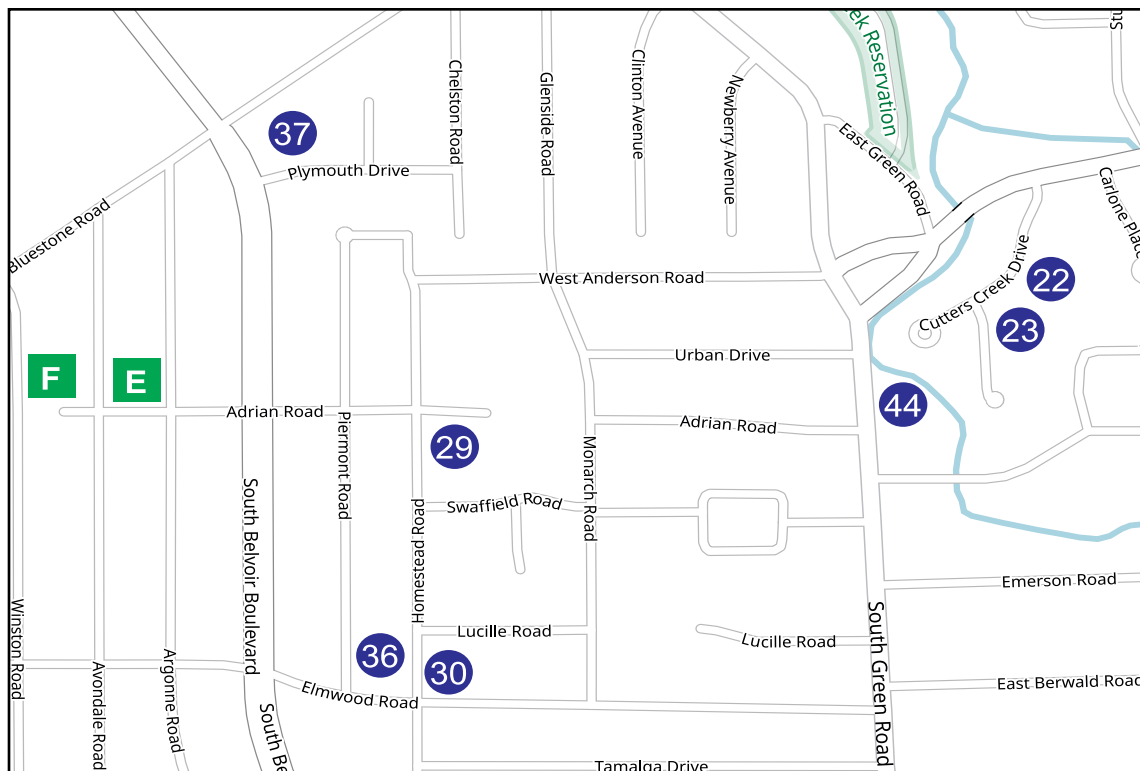
For More Details Visit Us Online at:
gardenwalksoutheuclid.com

south euclid



SPONSORS





GARDENWALK GROUP ONE

22. 1013 Cutters Creek Drive

This peaceful respite had a little help from a professional landscaper who developed "the bones" of the design. A formal island bed greets you in the front yard anchored with a sea green Juniper, Karl Forester Grass, dwarf Fountain Grass & a Redbud tree with a mix of 'Visions' Astilbe, Cranesbill Geranium & Coneflowers for sparks of color. The rhythmic flow continues into the front foundation plantings with Boxwood. Then the colorful escort guides you around the garage into the peaceful back garden where a 'Heritage' River Birch, 'Donald Wyman' Crabapple, Norway Spruce, Mugo Pines & a 'Midnight' Butterfly Bush are some of the many plants nestled into a slope to create a "living" privacy fence. The sense of seclusion is enhanced by the numerous plantings around the patio where a dining set & rocking chair provide the perfect vantage point to savor the view. The garden surrounding the sunroom is a glitzy "work in progress" as the homeowners add their personal touch!

23. 1021 Cutters Creek Drive

Anchored with Amelanchier, a chorus of sophistication & charm surrounds the shady front garden packed with shades of blue & pink with 'Walker's Low' Nepeta & Yarrow. Three 'Little Lime' Hydrangeas merrily dot the landscape adding shape & texture. The sunny side garden bubbles with the melody of Obedient Plants, Barberry, Sedum & a magnificent Magnolia tree. An island bed with a bird bath, carved from rock, will pique your curiosity of what goodies lie within the back garden. Beds of Lavender & treasured Rhubarb applaud your arrival. A climbing Honeysuckle hugs the privacy fence beckoning you to the patio. The focal point is a fountain flanked by Roses perched in a sea of colorful plantings. This sunny backyard retreat is truly a sight to behold!

29. 1095 Homestead Road

Here is a unique gardener's interpretation of a distinctive garden. A collection of statuary & other interesting yard art is interspersed throughout the landscape beds. Assorted flowering perennials & shrubs help ground the view. With several iron benches & chairs, take a break & enjoy the special pieces of this landscape quilt!

30. 1203 Homestead Road

This Japanese-style garden combines the basic elements of plants & rocks with simple clean lines to artfully create a tranquil sanctuary. Conifers provide soothing shades of green for year-round interest. Some echo the pyramidal form of the pagoda while others frame the feature with their low spreading branches. Of course, the back-island garden features a lantern in this highly manicured masterpiece!

36. 1191 Piermont Road

Wow, what one can do with a minimal amount of space! Perennials do a joyful dance with annuals & garden art at every turn. Every nook & cranny will put a smile on your face. The experience culminates with a pond & waterfall!

37. 4225 Plymouth Drive

Joseph Lanese, a developer, designed & built the French-style Tudor home in 1930. The simplicity of the front landscape doesn't hint at the backyard treasures. The homeowner's love of curves is evident in the design of the garden beds, which are a tribute to the beauty & variety of the perennial plants available to gardeners in northeast Ohio. The semi-shaded gardens provide a welcoming respite for visitors & wildlife alike. In the back corner of the yard is a wall that has been constructed with bricks that originally paved Belvoir Blvd. Architectural fragments from various local buildings have special places in the garden beds.

44. 1065 South Green Road

A peaceful garden experience is created with undulating living walls of textured greens in this shady double lot. The sloping front & side gardens feature layers of naturalistic plantings & a circular driveway graced with hanging baskets, garden ornaments & statues of deer. Then, stroll down the drive into a secret retreat that emanates the feel of a private estate. The woodland experience climaxes with the gentle descent of the back garden to a picnic area at the base of Euclid Creek. Experience the vantage point from the top of the hill!

F. The Winston "Pocket" Park (1085 Winston Road)

Located in close proximity to the Argonne Park, serves as a favorite walking path between Avondale & Winston Roads. Two decorative benches allow residents to stop & enjoy the park-like setting. The park boasts a four-square court & a grassy play area for children. It was the site of the City Jam live music festival a few years ago!

E. The Argonne "Pocket" Park (1080 Argonne Road)

Developed with the assistance of residents Jim & Pam O'Toole who helped with the design & maintenance of this vibrant perennial-filled sitting park. The rhythmic flow of the naturalistic plantings leads you along the winding garden path. Everywhere you look there's something to behold. The park also features a Little Free Library & decorative benches. The colorful ambiance of the park changes with the four seasons! Just the place to spend a lazy afternoon.

GARDENWALK GROUP TWO

11. 1172 Berwick Lane

This garden in the “corner” of the cul-de-sac has a delightful vantage point. The front yard complements the neighboring gardens. The entry area beds are graced with an artful display of Pines, Rhododendrons, Azaleas, Stachys & Clematis. Daisies & Obedient Plants greet you in the sunny perimeter along the side. The backyard is also graced with Azaleas & Rhododendrons, with Hellebores & Myrtle joining in, leading you to a stone deck & patio nestled in the glen. The cozy shady woodland area offers the perfect escape from a hot, sunny afternoon!

12. 1195 Berwick Lane

This small backyard garden is truly a woodland oasis. A 3-foot sculpture of two lovers embracing is hidden in a beautiful backdrop of Hydrangeas, Roses & Pieris japonica. While whimsical art objects & several potted plants dance joyfully in the patio area, you can enjoy the highlight of their garden. Beyond the fence is a serene setting provided by the woods, dominated by majestic oak & maple trees. This shady sanctuary is home to numerous species of birds & animals, including deer. Come enjoy the sights & sounds of nature!

13. 1199 Berwick Lane

The front & side perennial beds are a work-in-progress. As you stroll along the side garden lined with overflowing Hosta & Iris, you'll pass a rain barrel that is a valuable addition to the garden. In the backyard, the rustic setting of the dense forest along a tributary of Euclid Creek provides a calming backdrop. Several huge Cherry trees were harvested in 2016, & the wood was cured & fashioned into a lovely deck overlooking the creek & three beehives. Pause a moment & enjoy the deck!

14. 1203 Berwick Lane

A fusion of different sources of inspiration from years of travel, this restful haven is planted in the cottage-style. The shady front gardens are a flowing eclectic collection of trees, shrubs, perennials & container plants. Layered plantings of roses & almost 100 containers beautify the home's side garden. A repurposed children's playset in the backyard holds plantings of Sweet Autumn Clematis & Climbing Hydrangea. Clematis intertwined with Roses along the double decks offer a lush view of a tributary of Euclid Creek. Kick back & enjoy a lazy afternoon!

15. 1207 Berwick Lane

As you approach this garden, you're greeted with a colorful display of plantings that seem to wave a welcoming hello. Annuals & perennials are nestled amid lots of novelties & potted plants which escort you along the garden path. As you walk through the back gate, you'll pass by plantings of Iris & Hosta, to name only a few of the goodies that lie within. Two amazing raised decks surround an inviting heated in-ground

pool with lots of colorful potted planters & flowers. At the rear of the property is the beautiful flowing Euclid Creek. Truly a sight to behold!

16. 1208 Berwick Lane

Located on a quiet cul-de-sac, the unusual setting of this garden, with hills & valleys all in one property, provides an opportunity to showcase a multitude of flowers, shrubs & trees. A vast array of horticultural species is showcased using a variety of design techniques. Raised beds, retaining walls, dry alpine & moist woodland settings are all incorporated into this luscious landscape. Starting at the intimate entrance accented with lush verdant foliage & ending at the sunny raised beds along the driveway, you'll be taking plenty of notes!

17. 1211 Berwick Lane

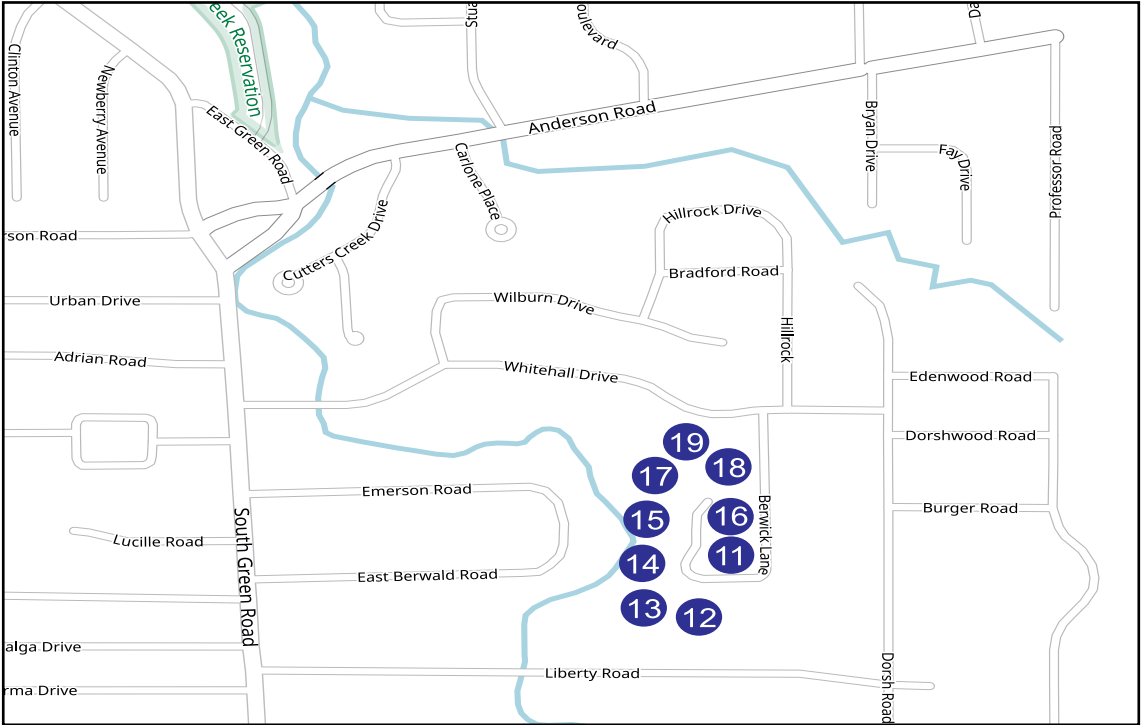
Diversity & vistas await you on this wedge-shaped lot. The colorful front garden is overflowing with Bleeding Heart, Columbine, pink Turtlehead, Rhododendron, Azaleas & 'Low & Behold' Butterfly Bushes. While fruit trees (Pear, Plum, Apple & a winterized Banana), Raspberry & Blueberry bushes draw you along the side garden. The “piece-de-resistance” are the terraced decks that lead you down to the expansive forest & creek below. The backyard is laced with full-size Butterfly Bushes, Chrysanthemums, climbing Roses, Hibiscus, Rose of Sharon, Clematis, Hyssop (to deter the deer) & more. As you walk through the back garden, you are transported to a secluded garden sanctuary where thoughtfully chosen plants & artifacts reflect a tranquil aesthetic!

18. 1214 Berwick Lane

As you stroll along the long stately driveway bordered by a gentle grassy slope, you can only imagine what treasures lie within this landscape. A unique rock garden with Yucca & shrubs is nestled into the climax at the top. The classic front garden is bordered by Boxwood & bulbs. One can only dream!

19. 1215 Berwick Lane

The front evergreen garden features leaf textures & shades of green offering 4-season interest. Then stroll down the stepping stones along the small valley on the western side of the driveway to a brook in the backyard woods. The back steps are bordered with perennial grasses, Stachys, Sedum & Hydrangeas that seem to whisk you to a blue ceramic garden seat, the perfect perch to observe nature. In this quiet oasis, even birds sound amplified!





GARDENWALK GROUP THREE

40. 1304 South Belvoir Blvd.

This home's well-crafted perennial gardens begin at the sidewalk & flow into each area of the landscape. Elegant combinations of dramatic foliage, textures & blooms mingle together throughout the front garden to create artistry in every corner of this lush landscape. Carefully placed annuals add a glimmer of color to the "sea of green". Time permitting, the back garden will be open for your enjoyment. Check the garden sign for details. Once you enter the back gate, masses of thoughtfully blended plantings surround a pond with another hidden surprise nestled in the back corner. Have you ever seen a frog pond?

1. 4162 Ardmore Road

The traditional sunny landscape in the front keeps secret the shady backyard area. A "Three Whiskey Barrel" fountain provides a calming backdrop to a secluded patio. Throughout the garden, you will discover "recycled" décor neatly tucked into the perennial plantings including a repurposed swing set turned into an expandable playhouse for the grandchildren. Your journey culminates at the greenhouse designed & built to simulate one seen at Gales Garden Center. It definitely pays to be creatively handy!

2. 1284 Argonne Road

The perennial front garden gives way to several "no water" vegetable plots which provide for the family throughout the season. What isn't consumed by early fall is either canned, dehydrated or frozen for the winter months. Although the deer camp out on this corner lot, the crops are protected & thrive. Yummm!!!

3. 1285 Argonne Road

Come enjoy a cheery corner garden that features colorful low-maintenance perennials. In the side garden, vegetables & flowers enjoy each other's company, as well as, the periodic visitor, raccoons, deer & groundhogs. Neighbors often call to notify them of unwanted visitors!

4. 1315 Argonne Road

A traditional landscape in the front features natural plantings where textures, foliage & verdant hues add visual interest throughout all four seasons. Trees, shrubs & perennials elegantly grace the shady back patio. The perfect place to relax or entertain!

5. 1320 Argonne Road

The "fullness of joy" was named by the homeowner's father 35 years ago & is a loving tribute to him. Casual exuberance & charm captivate garden visitors the moment they glimpse a Dwarf Lilac, Sedum & several varieties of Iris that grace the front garden. After strolling along "Sedum Row," you'll pass under a Trumpet Vine into the "secret" backyard garden. The love of Daylilies, Hosta, Lilies, miniature gardens & art objects abound throughout numerous rooms which escort guests to the Japanese-inspired garden. Seating areas are strategically placed to offer several different vistas with opportunities for solitude & reflection. In early summer, the whimsical nature of the garden takes center stage. Come savor the experience!

24. 4165 Delroy Road

What a difference a few plants can make! The cute front yard shouts out the homeowners' personality with perennials & annuals doing a joyful two-step. Vibrant flowers & lush greenery fill every nook & cranny of this landscape. Come dance among the flowers & maybe even learn the "L-step"!

7. 1333 Avondale Road

This delightful corner lot is truly a labor of love. The front garden has serpentine plantings of Ferns & Hosta that continue along the side to the back deck, which is where most gardens would end. However, the real surprise is tucked behind the garage, nestled in a shady corner. What an amazing revelation!

8. 1342 Avondale Road

This laissez-faire garden says, "Come in & wander". Only slightly tamed, Rudbeckia, Sedum & Daylilies have been added to bring continuous sparks of color & interest to this "organized chaos". The time-saving method of dense plantings has reduced the amount of weeding & watering.

9. 1399 Avondale Road

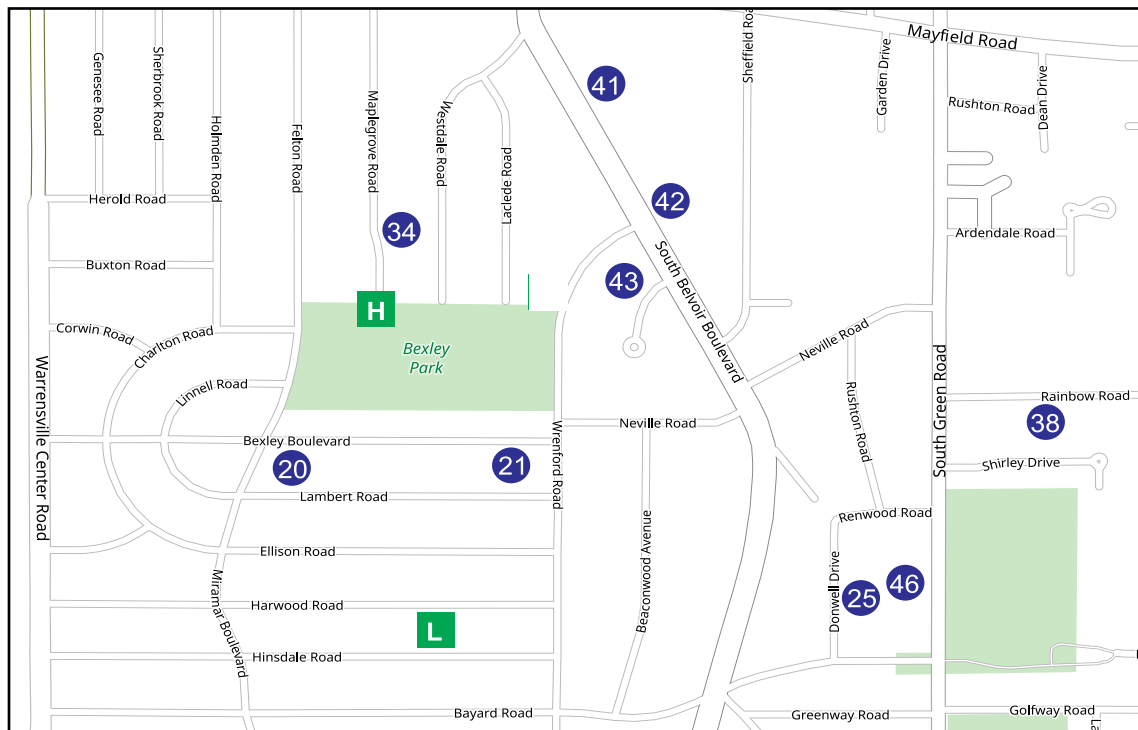
This charmingly different take on an English garden exudes personality & is truly a garden from the heart. The front yard is an endless sea of perennials with the archetypical picket fence. The floriferous plantings create a kaleidoscope of colors featuring a vibrant Smokebush. Even a curb-side flower bed has been added. The kaleidoscope continues along the side & leads you through the fence into the secluded back garden. A unique iron bench provides resting spot to enjoy the interplay of textures & colors. A trickling fountain & a cascading waterfall add to the peaceful panorama. This is truly an ever-evolving work of art!

10. 1419 Avondale Road

Over the years, the biggest challenge has been figuring out how to control a massive deer population that regularly wanders through the garden. As a result, after years of gardening, what remained in the garden is what has proven to be deer resistant. Why fight them; avoid them by having what they don't eat. The result, a colorful blend of annuals & perennials front to back. Of course, consideration was given to size, shape, color, texture & the play of light against shadows!

6. 1371 Argonne Road

The colorful perennial plantings in the front garden gracefully complement this country-style home. As you savor the beauty of the garden, you're drawn to the peaceful sound of flowing water which guides you into the backyard area. A multiple level waterfall flows into three consecutive ponds & takes center stage to the backyard plantings. The back porch offers the perfect vantage point to relax & enjoy the view.



GARDENWALK GROUP FOUR

41. 1515 South Belvoir Blvd.

A classic home ... a classic garden. But, juxtaposed to the classicism is contemporary glass sculptures interspersed throughout the landscape, reflecting the personalities of the homeowners. Culminating in the backyard, a very personable & inviting patio is to be found. Guests can enjoy the manmade lush plantings contrasting with Mother Nature's plantings in the natural wooded area that lies beyond the garden. Quite a treasure to behold!

42. 1573 South Belvoir Blvd.

Here's another example of a gardener's unique perspective on life. A fine example of a skillfully-constructed arbor enhances the gorgeous Roses, Tree Peonies & reflective statuary. Featured in the front garden, these items reflect the homeowners' cultural heritage.

43. 1600 South Belvoir Blvd.

Built into a hillside, a small garden by the side street greets visitors accented with a sturdy stone wall & plantings of flowers & small shrubs. Behind the 1950's ranch, is a newer patio with two rock retaining walls supporting a collection of Hostas. On the patio, containers are potted up with different herbs, Geraniums & hot weather-resistant flowers. Truly an example of outdoor living!

D. Bexley Community Garden - 1630 Wrenford Road

One of the newest community gardens, Bexley nourishes the body, the mind & the soul of its gardeners. Members of the neighborhood persuaded the city to build a new garden for their use. The entrance garden still has to mature into its full potential, but in time, this area will provide a wonderful backdrop to the vegetable plots. Bexley is also located in a park setting.

34. 1573 Maplegrove Road

This circa 1929, two-story, Sears English cottage-style home boasts two trees in the front landscape: a 'Crimson Frost' Birch & a 'Sunburst' Honeylocust. The homeowner, tired of lawn maintenance, created several beds surrounding the trees & bordering the yard. Pachysandra was allowed to spill out from under the front deck. The backyard's park-like setting also sports several beds with English Ivy filling in the open spaces. The rear of the yard is now home to a weeping Spruce & other specimens. Along the side, another bed camouflages roots from a neighbor's Maple tree.

20. 4134 Bexley Blvd.

This garden combines a plethora of plants into a horticultural concerto. Along the drive, Yucca & Iris build into a crescendo that ends at the front of the house. Then, the side garden performs an encore performance. A masterful illustration of the beauty of a simplistic design!

21. 4222 Bexley Blvd.

Ever wonder what type of garden a busy young family with literally "zero" time should construct? This yard is a perfect example of what can be done. The front trees & perennial plantings compose a striking front view with a backplash of mulch. The rhythmic flow of the side garden takes visitors to a low-maintenance rear garden that sports a relaxing deck. Why have a ho-hum yard? Here's a real stand-out eye catcher!

L. 4191 Hinsdale Rd. Community Garden

38. 4498 Rainbow Road

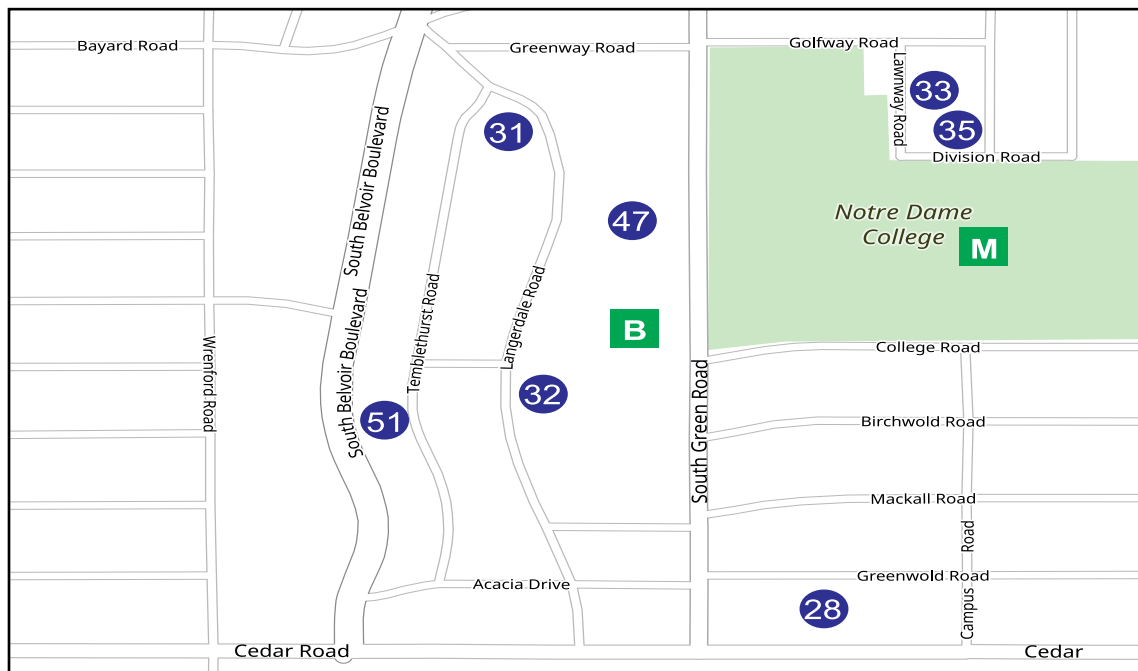
Enjoy one of South Euclid's heritage homes in a traditional garden setting. Daylilies, Rudbeckia & other perennials greet visitors in a time-honored border design. With a deep woodland backyard, the homeowner has collected interesting perennials such as Ferns, Daylilies & Hostas. Several varieties of Ferns are located in front of a retaining wall & interspersed between hand-arranged stones. Numerous garden rooms are defined by rock borders. A nature trail has been laid out to intertwine around the various spaces of the landscape.

46. 1776 South Green Road

This Cape Cod-style home, nicknamed "the estate," is almost an acre. It's landscaped with a natural border of shrubs & trees which conveys a park-like feeling. Cool fountains & original art are integrated into the perennial landscape. The homeowner, a full-time artist, has added her creative touch to her front & back steps. The studio/garage, which opens with front & back doors, is full of painted tools & other whimsical embellishments. A unique experience.

25. 1767 Donwell Drive

The front garden takes advantage of every possible niche with a glorious street-side display of vibrant colors. The tree lawn bed is overflowing with Daylilies, Lavender, Salvia, Echinacea, Blue Fescue Grass & shrubs. The blue & purple theme continues throughout the drought-tolerant garden beds announcing the arrival of summer. Hmm, who said a beautiful garden requires a lot of time & watering!



GARDENWALK GROUP FIVE

31. 1876 Langerdale Road

Reflective of the diversity of this suburban community, this quaint garden brandishes a shady demeanor. A traditional landscape of thoughtfully chosen plants & artifacts reflect the rustic feel of the neighboring homes. The perennial front & side gardens give way to the colorful containers used as spotlights that line the back deck & contrast with the natural setting surrounding the backyard. Located in a valley, this truly serene setting beckons visitors to stay awhile!

32. 2019 Laurel Hill Drive

This double lot is a masterful use of space. The simplicity of the shady front garden accentuates the stone architecture of the home. Enter the garden from the side lot which features an artistic living structure of 3 tree stumps of varying heights with vines, containers & a black brass headboard. Then enter the secluded perennial back garden where you will feel like you've traveled to England. This inner sanctuary is truly an unforgettable sight to behold!

51. 2032 Templehurst Road

As you approach this low-maintenance garden, not a single blade of grass is in sight. Island beds are surrounded by a "lawn" of rocks. Junipers & dwarf evergreens provide a year-round point. While, flowering shrubs (Hydrangeas, Spireas, Rose of Sharon) with flowering perennials (Lavender, Peonies) & a gorgeous Magnolia offer a colorful counterpoint. Come & dance to the music from this "living" symphony!

33. 1885 Lawnway Road

This garden gem is truly a treasure in itself. Set off by a mature Maple, this charming garden beckons you to come in & view the different textures, colors & shapes. The backyard area invites you to enter & explore the ingenious blend of perennials & vegetables bursting from their seams. Vibrant flowers around the perimeter are interspersed with statues, birdbaths & even a shallow cement "bee-bath"! The main event in this backyard showcase is the beautiful rainbow of geraniums the owner has over-wintered for 20 years. Wow!

35. 1896 Maywood Road

This delightful corner lot overflows with groundcovers, perennials & ornamental grasses. With a floriferous Panicle Hydrangea as a focal point, the rolling landscape features Hostas, Hydrangeas, Lenten Rose, Hellebores, Iris & Roses laced with annuals to give you more thrills than a roller coaster. Combinations of dramatic foliage, textures & blooms merge with peace signs, metal sculptures & stars to form artistic touches in every corner of the rock gardens. Many of the elements in the garden are rescued from other gardens. Be sure to stop & notice the bunny sculptures along with the "real bunnies"!

47. 1936 South Green Road

Sanctuary on Green is situated on a former Jerusalem Artichoke farm that was originally over 25 acres. The home in which the restaurant & gift shop are housed was built in 1910 by entrepreneur Fred Langer & his wife Rosemary. The 140-year-old barn now houses the studio of sculptor Norbert Koehn, an award-winning & nationally renowned sculptor. In 2009, Victoria & Norbert opened the first residential home-restaurant in Cuyahoga County. Relax & enjoy on the terrace, the restaurant's over 100 loose-leaf teas & healthy meals or desserts. Overlooking the Nine Mile Creek wetland's spectacular view, the landscape is embellished with natural beauty offering an eco-friendly, peaceful & spiritually uplifting experience. Gifts can be selected in a classic European setting. Then experience a meditative walk in the gardens & savor the treasures of Norbert Koehn, who brings an understated sophistication to each project, always resulting in an elegant interpretation of both sacred & secular themes sprinkled throughout the gardens. The gardens will be open both Saturday & Sunday. The restaurant will be open from 11:30 am to 2:00 pm on Saturday ONLY & the gift shop from 11:00 am to 5:30 pm on Saturday ONLY. Maybe you'd like to start the GardenWalk in this serene setting & enjoy an early lunch. Either way, it is a must-see experience!

M. 4545 College Road - NDC Grows

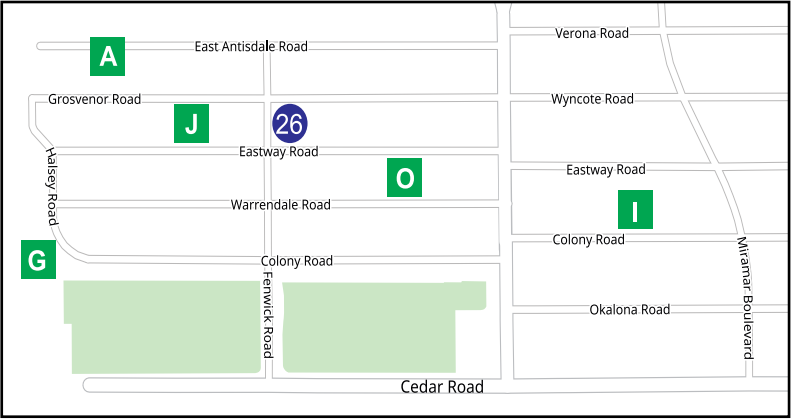
B. Nine Mile Wetland - 1980 South Green Road

The Nine Mile Wetland is a naturalized stormwater detention & treatment area that was originally a segment of Nine Mile Creek. It was first converted to a grass-covered retention basin to capture rain from storm drains connected to pipes beneath parts of South Euclid & University Heights. In order to slow the flow, filter, & clean the water before it rejoins the creek buried under Belvoir Blvd. & makes its way to Lake Erie, the basin was widened & converted, in 2008, to a series of 13 ponds & weirs (small dams) & was planted with native trees, grasses, & perennials. Just below the overlook, a stand of Common Milkweed serves as a Monarch Butterfly nursery. Ducks are regularly seen in the ponds. Now, stormwater leaving the basin at the north end is cleaner than the water entering from the south end & from South Green Road. The native vegetation supports a robust, diverse population of birds & wildlife. The wetland can also be viewed as you sip tea or coffee & enjoy a snack next door at the Sanctuary on Green which is on the GardenWalk!!!

28. 4524 Greenwold Road

Various perennial plantings grace the front garden & pique the interest of all who pass by. A glimpse into the backyard reveals the whimsical nature that abounds within. Of course, the center piece is the overflowing rainbow "bottle garden" that shimmers in the noonday sun. Cleverness & ingenuity abound. Come experience a bit of the unusual!

GARDENWALK
GROUP SIX



A. Oakwood Green - 3761 East Antisdale Road

Oakwood Green is a 21-acre nature reserve donated to the City of South Euclid by the developers of Oakwood Commons, who created the 7-acre wetland complex & the fitness trail. Preserving this portion of the former Oakwood golf course is allowing the original Oak forest to reclaim the land, provide habitat for birds & wildlife, & improve air quality. The wetland receives storm water that has been filtered through the bioswales at Oakwood Commons & is home to ducks & a resident blue heron. 45-minute tours along the mile-long trail will begin at 10 AM and 2 PM at the parking area off East Antisdale Road. No reservations are required. Rain or shine.

26. 3861 Eastway Road

A breath-taking corner lot explodes with a life force of Cypress & Blue Spruce. Stone battlements produce a fortress-feeling against the red brick castle. Circles of Lemon Cypress create a flowing cavalcade &

fruit trees provide a smorgasbord for birds & wildlife. Flowering beds & containers encourage a feeling of profound & delighted enchantment!

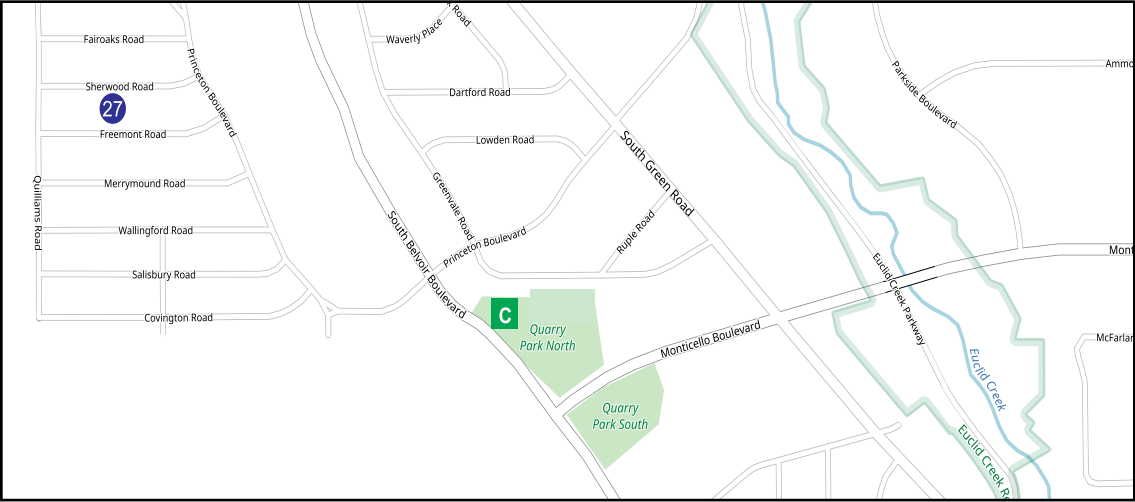
J. 3799 Eastway Rd. - Community Garden

O. 3915 Warrendale Rd. - Community Garden

I. 4069 Colony Rd. - Community Garden

G. The Colony “Pocket” Park (3750 Colony Road)

This serves as a quiet destination featuring naturalized areas overlooking the Dugway Brook. The focal point of the garden is a wooden sculpture created from a fallen tree found on the site by Sanctuary on Green's Norbert Koehn, an award-winning & nationally renowned sculptor. Truly a sight to behold!



GARDENWALK GROUP SEVEN

27. 3799 Freemont Road

As you enter this backyard you're transported to a foreign land. The Japanese-style garden fencing encases the different garden rooms & adds an air of seclusion & peaceful contemplation. White Flowering Dogwood, dwarf American Arborvitae, Mugo Pine, 'Linesville' Arborvitae, statues & several lanterns help create the symmetrical balance & symbolism which are key elements of the garden. The gravel pathways lead your eyes past the plantings & seem to beckon exploration of what's around the next corner, maybe a tea house. The dwarf Globe Blue Spruce, Siberian Carpet Cypress & 'Gray Owl' Juniper help add simplicity & texture to the overall design. The basic elements of the plantings & rocks with simple clean lines, help create this tranquil retreat. A small bench on the right offers the perfect spot to just sit & reflect!

C. Quarry Comm. Garden - 711 South Belvoir Blvd.

A recent addition to the South Euclid community garden family, Quarry is the only community garden that contains a bio retention cell. The other flower gardens were planted only a few years ago & have matured into a flourishing multi-species environment that attracts a variety of pollinators to the vegetable gardens. From the first awakenings of spring to the last vestiges of fall, insects can be seen partaking in the nourishment that the pollinator garden provides. This garden was planted by the South Euclid Garden Club along with the entrance gate gardens. The entrance provides a welcome mat for visitors. The garden club also planted a Sedum collection in one of the garden plots. The variety of colors & textures that are available in the Sedum family are featured. Outside the gate throughout the park are 5 more gardens. Near the park entrance is a garden built around the old Quarry fireplace with a bench to savor the plantings. The four other gardens are planted in old exercise stations along Belvoir Blvd. that range from sun-drenched to shade-dappled.



GARDENWALK GROUP EIGHT

45. 1320 South Green Road

Vibrant flowers & opulent foliage are happily nestled in every nook & cranny in this corner garden. The rhythmic flow of the front yard embraces onlookers. Tiered beds of richly layered plantings rise up to direct visitors to view the garden along the side. A peak into the backyard reveals a pond creatively tucked into a shady corner. Marvel at the ingenious use of space as an impressive array of vegetation happily co-exists.

* South Euclid Community Center

Maps, Information, Water, Restrooms

K. Greenfield Community Garden

48. 4614 South Lyn Circle

A private secluded garden on this cul-de-sac provides a quiet respite from the troubles of the day. With Euclid Creek in the background, gurgling water drowns out the sounds of the city. Rustling grasses sway in the breeze & hypnotize one with their movement. Other plantings add splashes of color & interest. And, all of this is just in the front yard. A front porch affords a stage to watch & listen.

P. South Lyn Circle Cul-De-Sac Garden

Leaf textures & shades of green contrast with the colorful Sedum in this perennial garden. The garden is maintained by one of the homeowners but serves as a gathering place for everyone. Neighbors often congregate & catch up on the latest happenings or share gardening tips.

49. 4625 South Lyn Circle

The simplicity of the front garden doesn't hint at the complexity of what awaits your arrival. As you enter the backyard area you're greeted by well-crafted gardens that flow into each area and level of the property. A gazebo and stone patio anchor the lush perennials and evergreens that abound throughout. As you stroll along the sloping green carpet remember to stop and enjoy a panoramic view of this garden sanctuary!

50. 4626 South Lyn Circle

The backyard perennial garden is a sight to behold. Watering, pruning & fertilizing needs were key factors in plant selection throughout the garden beds. This low maintenance garden is planted for minimal upkeep due to time & travel. Quite the backdrop for this woodland setting!

A Thriving Community On The Move

GardenWalk South Euclid is a legacy to the city's 100th Year Celebration. The free, self-guided tour allows visitors to tour at their own pace and visit more than forty eight neighborhood gardens, a twenty one acre nature reserve, a Sanctuary on the Green, unique neighborhood community gardens, a nine-mile wetland, and neighborhood perennial "pocket" parks. The event is held rain or shine and visitors can bike, walk or drive the tour route while discovering shops, unique restaurants, green spaces and gathering places in our thriving community. The GardenWalk draws hundreds of visitors from as far away as Erie P.A., Smithville, Dublin and Columbus. Garden maps are available online and the South Euclid Community Center on Victory Drive. What an excellent way to start the summer and enjoy the beauty around us!

NOTES